

SASD 2020 SYSTEM CAPACITY PLAN EXPANSION TRUNK SHEDS

UN RIO LINDA SW TRUNK SHED

Area Description

The UN Rio Linda SW Trunk Shed is located south of Elkhorn Boulevard, east of the Natomas East Drainage Canal, and west of Dry Creek (North).

Trunk System Facilities

This trunk shed has been modified since the previous System Capacity Plan, and now two small trunk sewers would serve the shed.

One of the trunks would originate on Marysville Boulevard, approximately in between 2nd and W 2nd Streets. The trunk will follow Marysville Boulevard northwest until turning right on W 2nd Street and connecting to Upper Northwest Interceptor manhole N57-MH0041A.

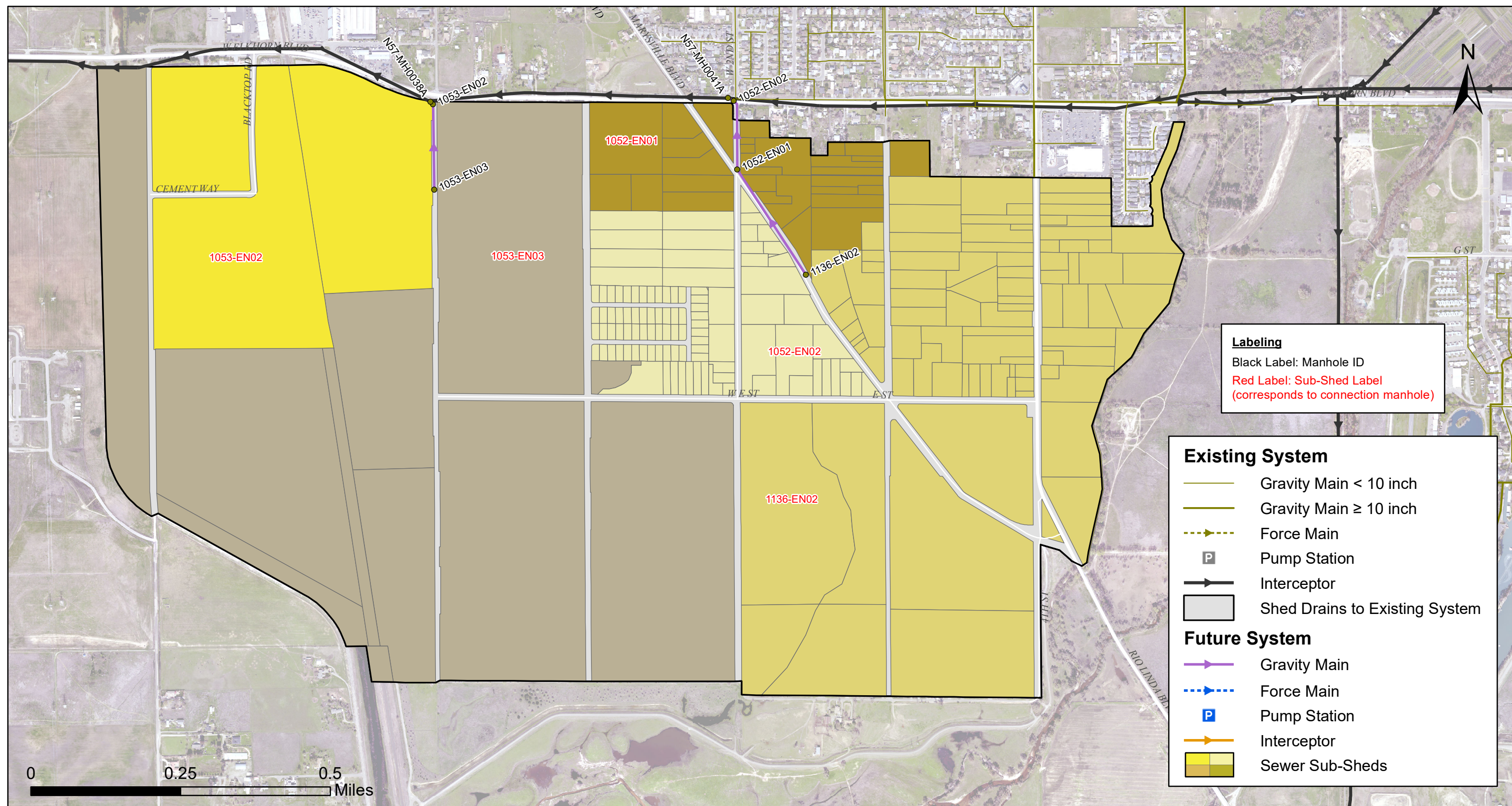
The second trunk originates on W 6th Street and travels north, connecting to Upper Northwest Interceptor manhole N57-MH0038A.

UN Rio Linda SW

Trunk Sewer Data and Model Results

Buildout **10-Year Design** Storm

US Manhole	DS Manhole	Link Type	Diameter (in)	Length (ft)	US Rim Elev. (ft)	US Invert Elev. (ft)	DS Rim Elev. (ft)	DS Invert Elev. (ft)	Slope (%)	Full Capacity (mgd)	Peak Flow (mgd)	% Full Capacity	d/D
1053-EN03	1053-EN02	Gravity Main	15	754	34.0	8.1	38.0	6.9	0.15	1.6	1.2	74	0.64
1053-EN02	N57-MH0038A	Gravity Main	18	31	38.0	6.7	38.8	6.7	0.14	2.5	1.7	68	0.47
1136-EN02	1052-EN01	Gravity Main	15	1106	44.0	15.3	44.0	13.6	0.15	1.6	1.2	73	0.73
1052-EN01	1052-EN02	Gravity Main	15	616	44.0	13.6	42.0	12.7	0.15	1.6	1.4	88	0.72
1052-EN02	N57-MH0041A	Gravity Main	18	56	42.0	12.5	41.6	12.4	0.14	2.5	1.7	68	0.5



UN Rio Linda SW
Sub-Sheds and Connection Manholes
Buildout Expansion Plan
FIGURE A.21-2

2020 SASD SYSTEM CAPACITY PLAN

Updated: 9/2/2020