

## SASD 2020 SYSTEM CAPACITY PLAN EXPANSION TRUNK SHEDS

## NN METRO AIR TRUNK SHED

**Area Description**

The NN Metro Air Trunk Shed is located north of Interstate 5 and west of Lone Tree Road. A small portion the shed, which is located south of Interstate 5, was recently incorporated into the Urban Services Boundary.

The trunk shed includes the Metro Air Park development and the Sacramento International Airport.

**Trunk System Facilities**

Most of the trunk facilities have been constructed in this shed. However, a trunk-sized pump station will be required to serve the area of the shed that is located south of Airport Boulevard. The pump station force main is planned to cross Interstate 5 at Powerline Road and connect to trunk manhole 366-119-1002.

The new pump station flows would ultimately drain to the existing S113 pump station. The existing S113 pump station cannot accommodate all the flow at buildout and will require upsizing once the station's current pumping capacity is reached.

# NN Metro Air

## Trunk Sewer Data and Model Results

Buildout **10-Year Design** Storm

US Manhole	DS Manhole	Link Type	Diameter (in)	Length (ft)	US Rim Elev. (ft)	US Invert Elev. (ft)	DS Rim Elev. (ft)	DS Invert Elev. (ft)	Slope (%)	Full Capacity (mgd)	Peak Flow (mgd)	% Full Capacity	d/D
1316-EN01	1316-EN02	Gravity Main	15	405	10.0	-18.2	10.0	-18.9	0.18	1.8	1.3	73	0.81
1316-EN02	1316-EN03	Pump									1.3		
1316-EN03	366-119-1002	Force Main	8	7401	10.0	-18.0	14.0	-4.5			1.3		



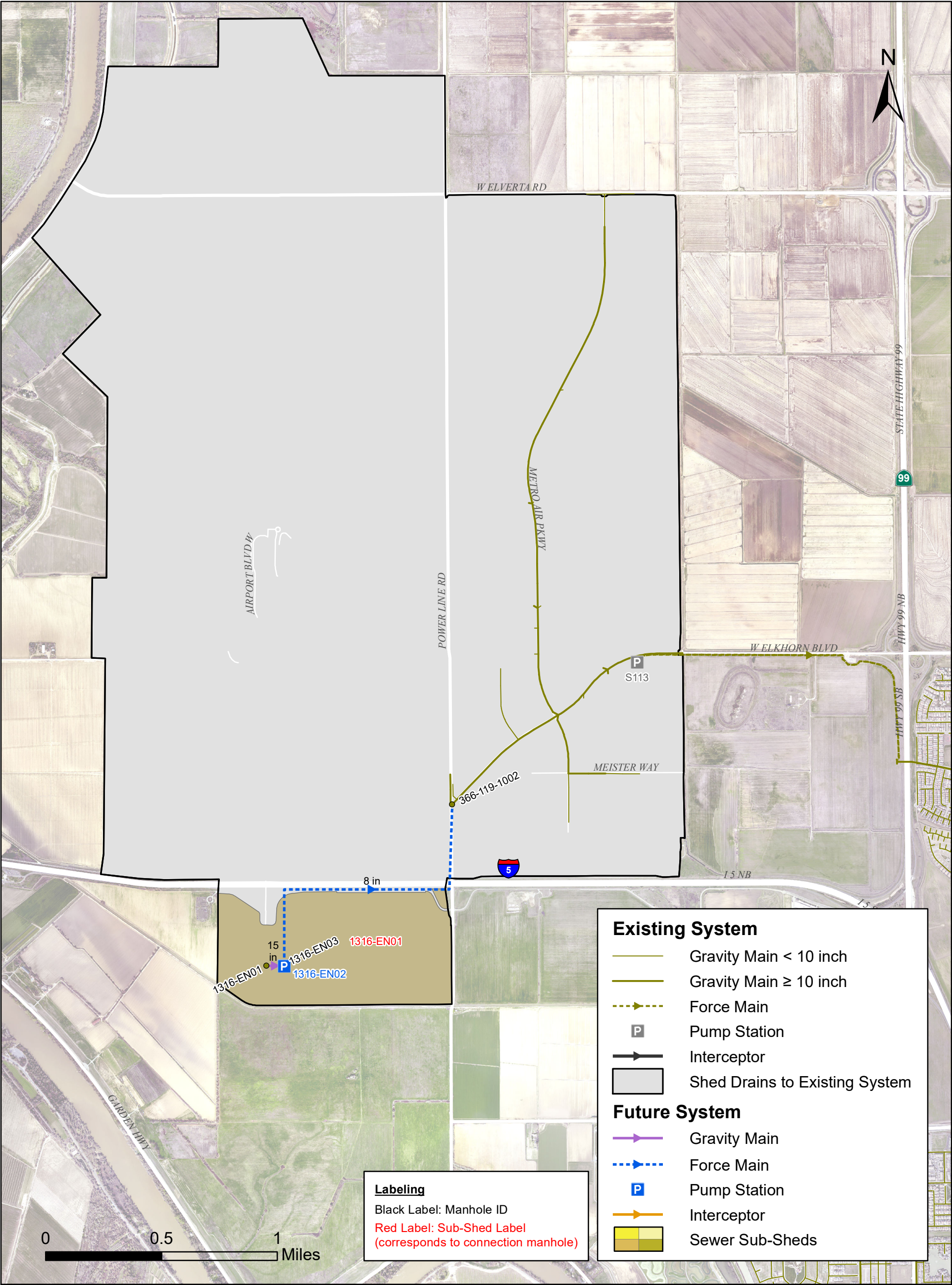


2020 SASD SYSTEM CAPACITY PLAN

NN Metro Air  
Sewer Shed and Facilities  
Buildout Expansion Plan  
FIGURE A.18-1

Updated: 8/27/2020





2020 SASD SYSTEM CAPACITY PLAN



NN Metro Air  
Sub-Sheds and Connection Manholes  
Buildout Expansion Plan  
FIGURE A.18-2