

SASD 2020 SYSTEM CAPACITY PLAN EXPANSION TRUNK SHEDS

LA LAGUNA RIDGE TRUNK SHED

Area Description

The LA Laguna Ridge Trunk Shed is located west of Highway 99 and east of Bruceville Road. The northern boundary of the shed is Elk Grove Boulevard, and Kammerer Road is the southern boundary. The Kammerer Road southern boundary of the shed is also Sacramento County's existing Urban Services Boundary. The trunk shed includes the Laguna Ridge Specific Plan Area and the Elk Grove Southeast Policy Area.

Trunk System Facilities

Most of the trunk sewers have been constructed for this shed, including the S153 (S.E.P.A.) pump station. The trunk sewers in the northern portion of the shed that drain to the S136 (Whitelock) pump station have been in operation for a while. To the south, trunk sewers were recently constructed in Bilby Road and Big Horn Boulevard. These sewers drain to pump station S153.

A smaller trunk is planned to connect to the trunk in Big Horn Boulevard at manhole 260-170-1014. Another trunk is planned to connect to the trunk in Bilby Road at manhole 260-167-1035.

Dual force mains convey the pump station S153 flow west in Bilby Road and then north in Bruceville Road.

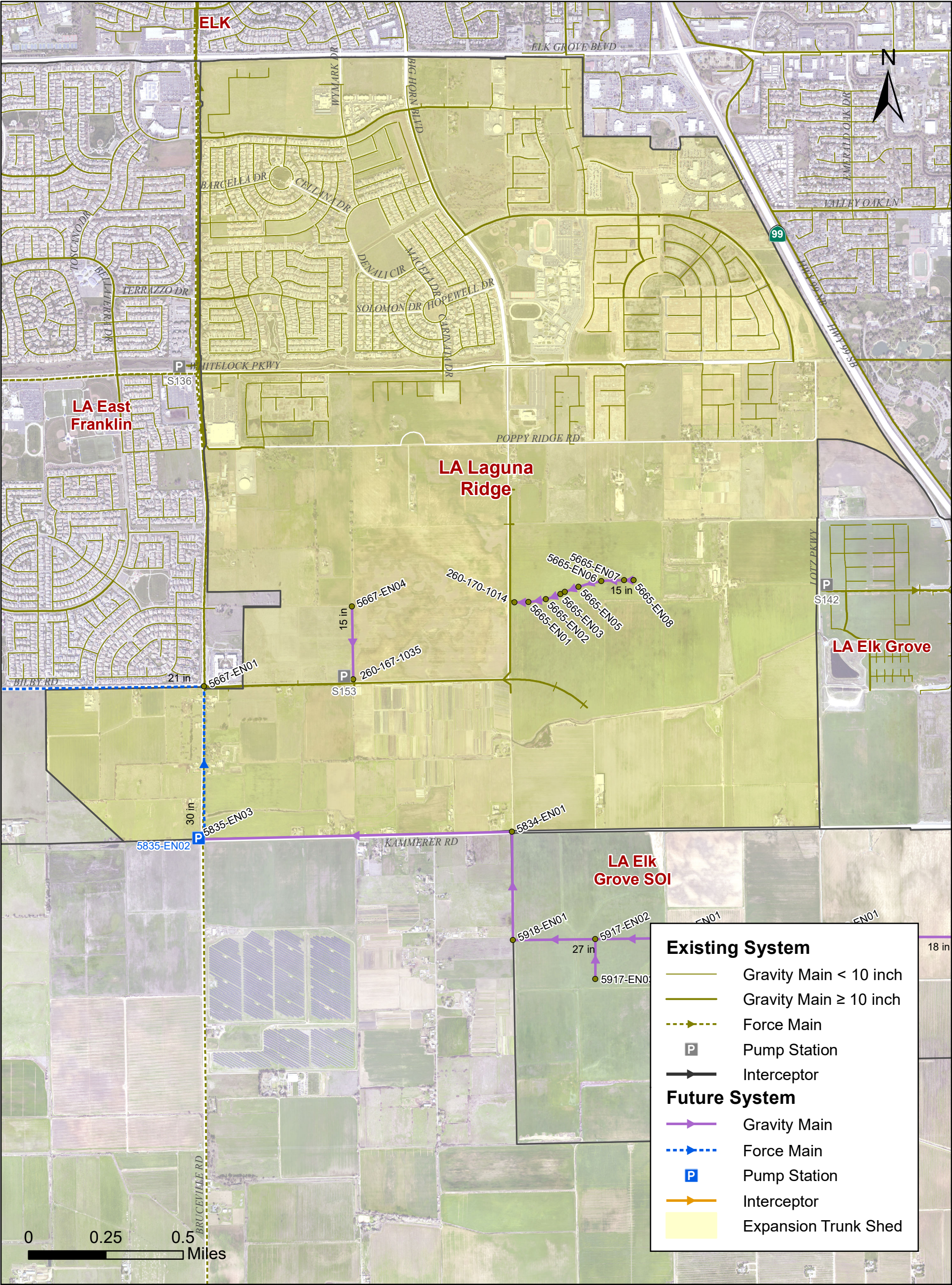
Currently, the S012 pump station (RCCC) force main discharges to a gravity sewer in Bilby Road that drains to the S153 pump station. However, in the future the S012 pump station force main discharge may be diverted to the future Elk Grove SOI pump station, if needed.

LA Laguna Ridge

Trunk Sewer Data and Model Results

Buildout **10-Year Design** Storm

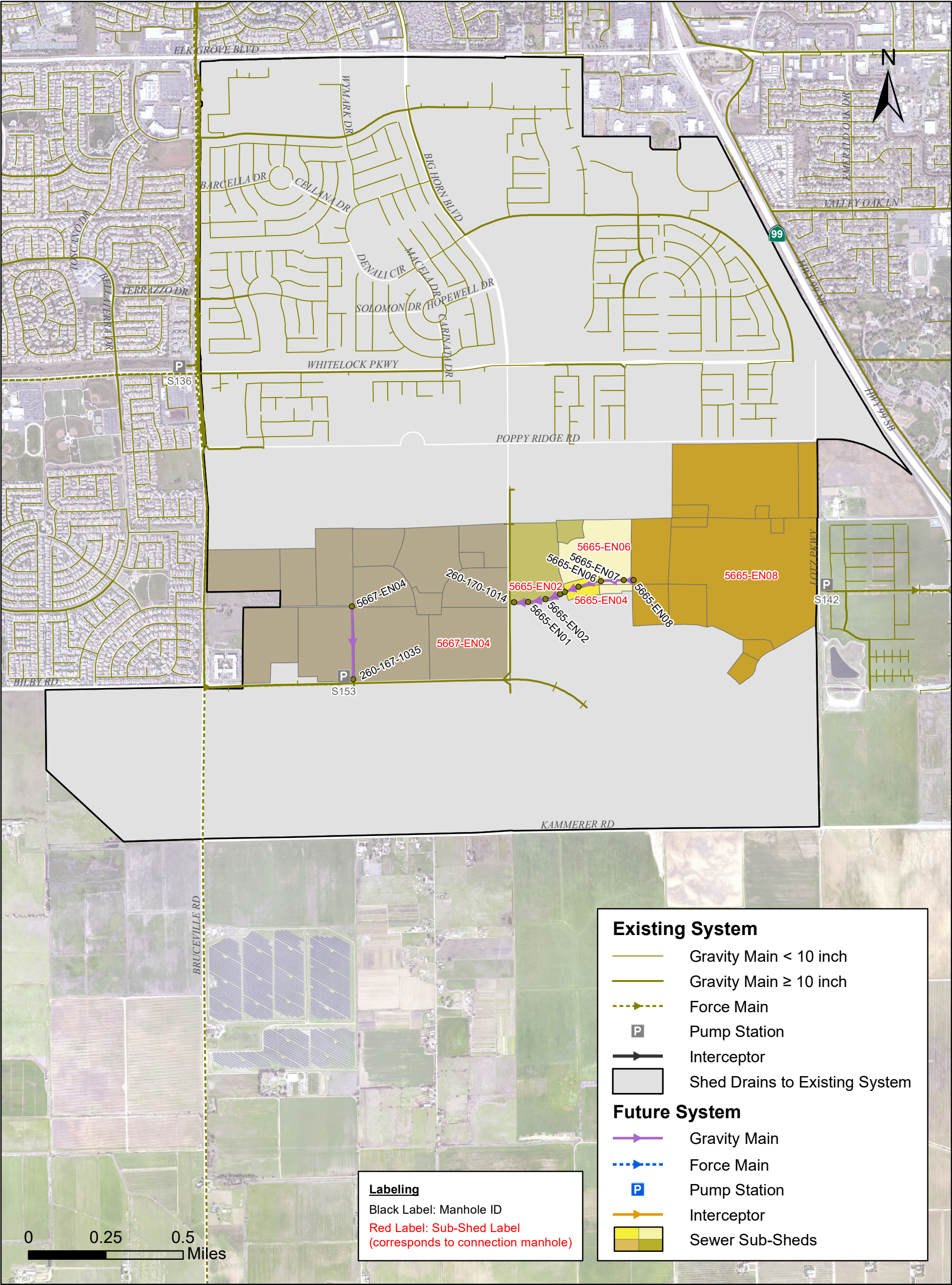
US Manhole	DS Manhole	Link Type	Diameter (in)	Length (ft)	US Rim Elev. (ft)	US Invert Elev. (ft)	DS Rim Elev. (ft)	DS Invert Elev. (ft)	Slope (%)	Full Capacity (mgd)	Peak Flow (mgd)	% Full Capacity	d/D
5665-EN08	5665-EN07	Gravity Main	15	255	34.0	14.6	34.9	14.2	0.15	1.6	1.0	63	0.57
5665-EN07	5665-EN06	Gravity Main	15	255	34.9	14.1	34.1	13.8	0.15	1.6	1.0	63	0.59
5665-EN06	5665-EN05	Gravity Main	15	360	34.1	13.7	33.1	13.2	0.15	1.6	1.2	71	0.62
5665-EN05	5665-EN04	Gravity Main	15	304	33.1	13.1	33.5	12.7	0.15	1.6	1.2	71	0.62
5665-EN04	5665-EN03	Gravity Main	15	80	33.5	12.6	33.2	12.5	0.15	1.6	1.2	72	0.6
5665-EN03	5665-EN02	Gravity Main	15	260	33.2	12.4	33.2	12.1	0.15	1.6	1.2	72	0.61
5665-EN02	5665-EN01	Gravity Main	15	274	33.2	12.0	33.5	4.8	2.63	6.8	1.3	19	0.64
5665-EN01	260-170-1014	Gravity Main	15	143	33.5	4.8	33.7	4.6	0.16	1.7	1.3	78	0.64
5667-EN04	260-167-1035	Gravity Main	15	1246	28.0	-2.4	23.2	-3.3	0.07	1.1	1.1	102	0.82



2020 SASD SYSTEM CAPACITY PLAN



LA Laguna Ridge
Sewer Shed and Facilities
Buildout Expansion Plan
FIGURE A.16-1



2020 SASD SYSTEM CAPACITY PLAN



LA Laguna Ridge
Sub-Sheds and Connection Manholes
Buildout Expansion Plan
FIGURE A.16-2