

SASD 2020 SYSTEM CAPACITY PLAN EXPANSION TRUNK SHEDS

BR ELDER CREEK TRUNK SHED

Area Description

The BR Elder Creek Trunk Shed is located north and south of Elder Creek Road between Mayhew Road and west of Eagles Nest Road. The trunk shed extends north to Jackson Road. The southern boundary is located north of Florin Road. Elder Creek Road is central to this sewer shed.

Trunk System Facilities

The trunk shed would be served by one major trunk sewer and two smaller sized trunk sewers. No trunk pump stations are anticipated for this shed.

The primary trunk would be placed along Elder Creek Road, with the upstream starting manhole located east of Excelsior Road. This trunk would drain westward and connect to the Bradshaw Interceptor at manhole N38-MH0067A, which is located near the intersection of Elder Creek Road and Bradshaw Road.

A minor trunk would connect to the primary trunk approximately halfway between Bradshaw Road and Excelsior Road. The minor trunk serves areas in the central shed.

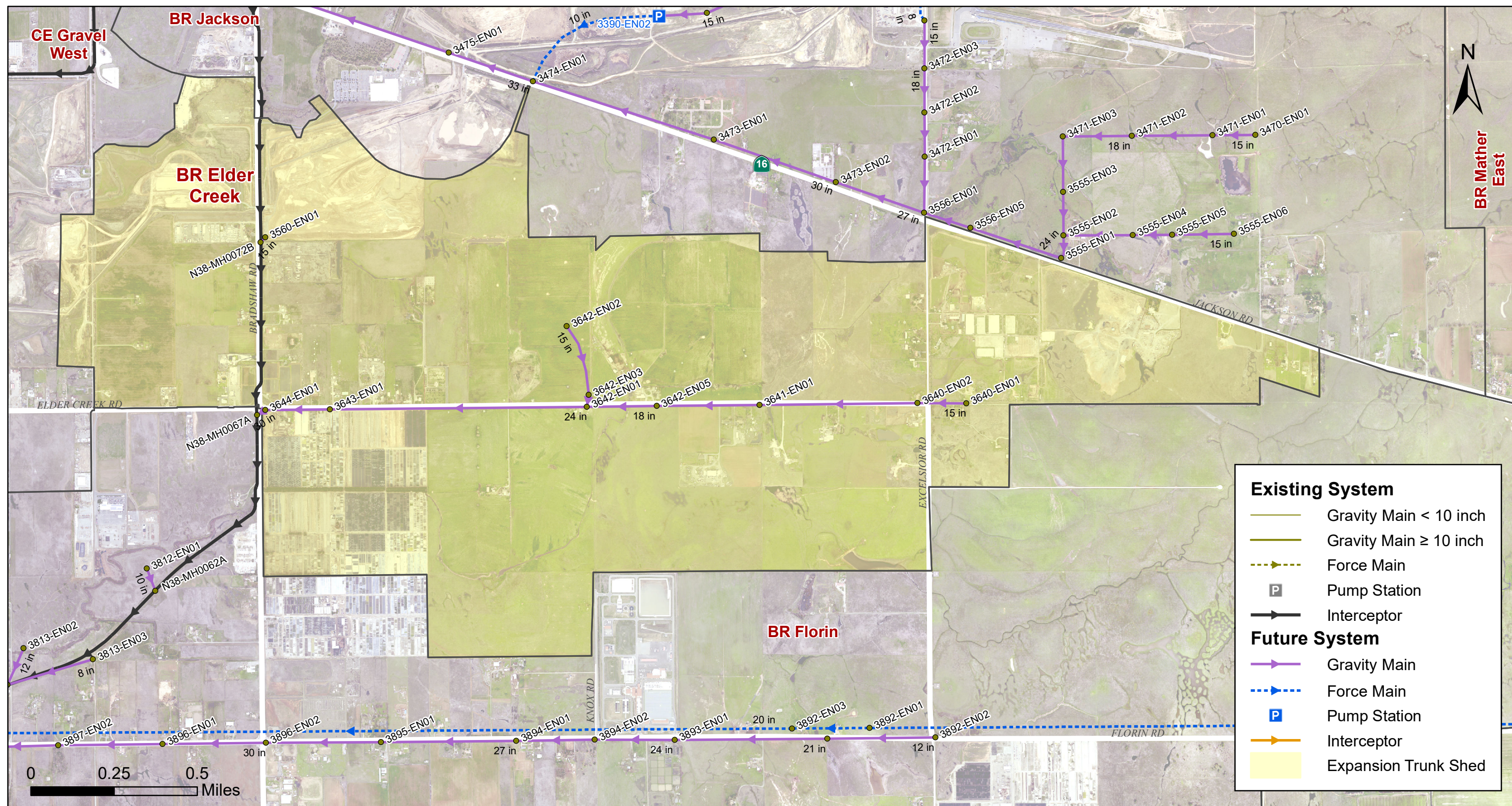
A second minor trunk would serve the area surrounding Bradshaw Road and is located between Jackson Highway and Elder Creek Road. This trunk is planned to connect to Bradshaw Interceptor manhole N38-MH0072B.

BR Elder Creek

Trunk Sewer Data and Model Results

Buildout **10-Year Design** Storm

US Manhole	DS Manhole	Link Type	Diameter (in)	Length (ft)	US Rim Elev. (ft)	US Invert Elev. (ft)	DS Rim Elev. (ft)	DS Invert Elev. (ft)	Slope (%)	Full Capacity (mgd)	Peak Flow (mgd)	% Full Capacity	d/D
3642-EN02	3642-EN03	Gravity Main	15	1165	78.4	55.0	76.0	50.5	0.39	2.6	1.3	50	0.5
3642-EN03	3642-EN01	Gravity Main	15	189	76.0	50.5	78.0	49.8	0.39	2.6	1.3	50	0.5
3640-EN01	3640-EN02	Gravity Main	15	771	119.9	93.4	114.0	92.0	0.18	1.8	1.3	75	0.65
3640-EN02	3641-EN01	Gravity Main	15	2504	114.0	86.9	84.0	72.0	0.59	3.2	1.3	41	0.73
3641-EN01	3642-EN05	Gravity Main	15	1632	84.0	72.0	80.0	64.0	0.49	2.9	2.5	86	0.86
3642-EN05	3642-EN01	Gravity Main	18	1108	80.0	64.0	78.0	61.0	0.27	3.5	3.0	84	0.71
3642-EN01	3643-EN01	Gravity Main	24	4077	78.0	49.0	64.0	39.0	0.24	7.3	5.0	69	0.66
3643-EN01	3644-EN01	Gravity Main	24	1026	64.0	39.0	63.5	36.5	0.24	7.2	5.6	78	0.66
3644-EN01	N38-MH0067A	Gravity Main	30	151	63.5	36.0	60.0	35.9	0.10	8.4	6.6	78	0.54
3560-EN01	N38-MH0072B	Gravity Main	15	109	58.0	38.0	58.4	37.8	0.18	1.8	1.4	77	0.59



**BR Elder Creek
Sewer Shed and Facilities
Buildout Expansion Plan
FIGURE A.4-1**

2020 SASD SYSTEM CAPACITY PLAN



Updated: 8/28/2020

